



AVANI sky

the reservoir of cosmic energy 3 bhk living space



AVANI sky

3 bhk living space

project by : **V² projects**, naroda | legal adviser : v.v. patel & co.
architect : 9th Street Architect - 98254 92457 | structure : Pyramid Consultant - 99254 25608
contact : 98250 14120, 96879 44094

binda 9824103310





Life is what happens to you when you are busy planning for it and enjoyment is what happens to you when you plan to live life as it comes. Nothing in life can come as expected but enjoying life is in our hands. One thing that's sure in life is that whether to make best out of it or live it as it is; is in our hands.

And here is one such place where once you step-in the only thing that will be constant is your companionship with success and life.

Enjoying life will make new sense here once you enter this place. No place ever would have been able to match this level and enjoyment will set a new benchmark for the years to come with this scheme.

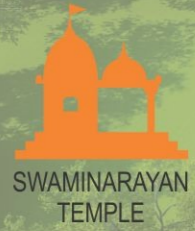
What's more important that this life of enjoyment comes to you in the city of Ahmedabad, which has constantly been in the news for all the good reasons.



blending joy, comforts & tranquillity

AVANI sky





24.00 MT WIDE ROAD

24.00 MT WIDE ROAD

7.50 m road

7.50 m road

WAY TO BASEMENT PARKING

DRIVE WAY

DRIVE WAY

PARKING

PARKING

UP DN

FOYER A

LIFT

LIFT

UP DN

FOYER B

LIFT

LIFT

SHOP 01

SHOP 02

SHOP 03

SHOP 04

SHOP 05

SHOP 06

SHOP 07

SHOP 08

SHOP 09

SHOP 10

SHOP 11

SHOP 12

SHOP 13

SHOP 14

SHOP 15

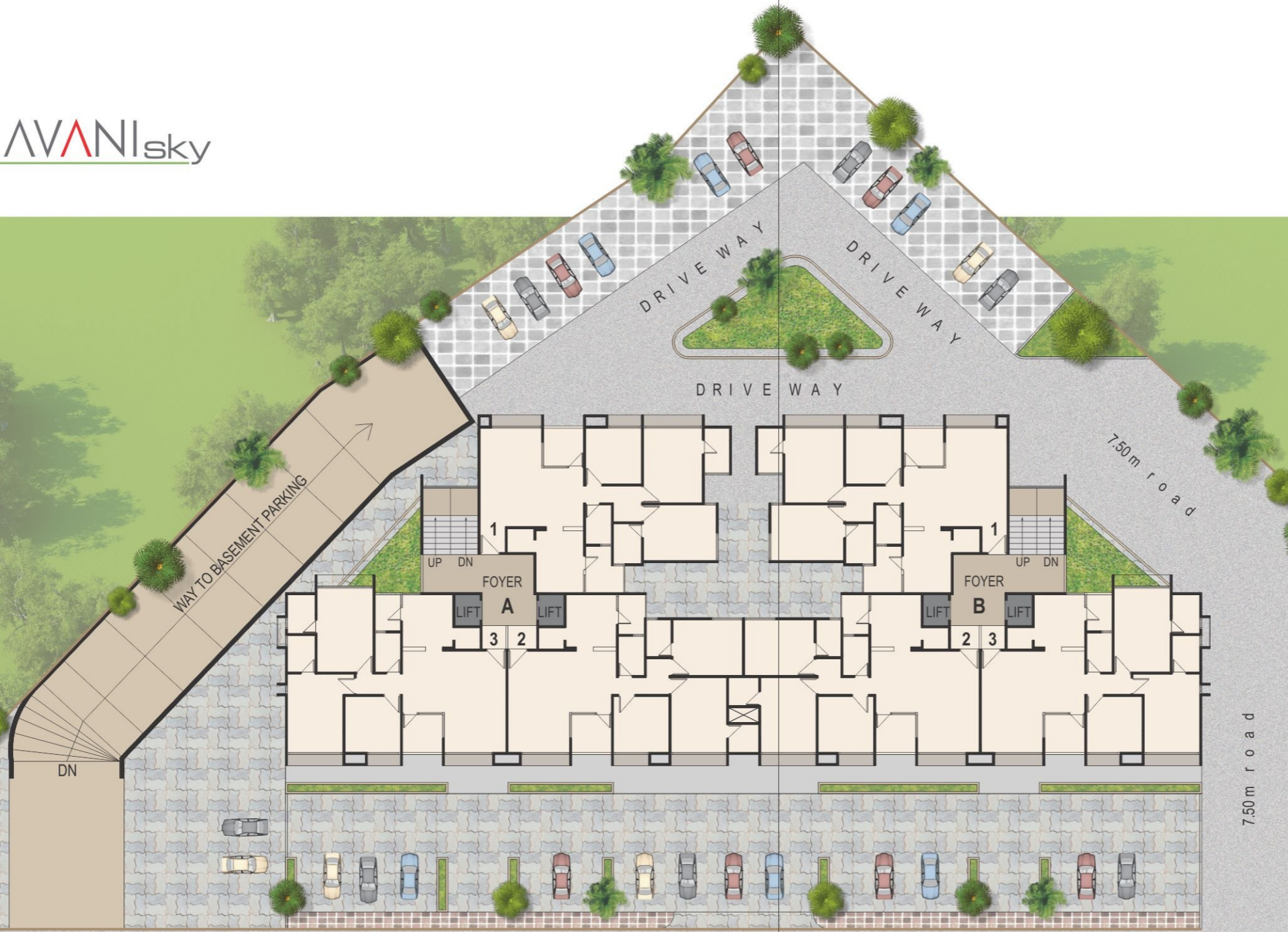
SHOP 16

PASSAGE

PASSAGE

DN

SEC. CABIN



24.00 MT WIDE ROAD

24.00 MT WIDE ROAD

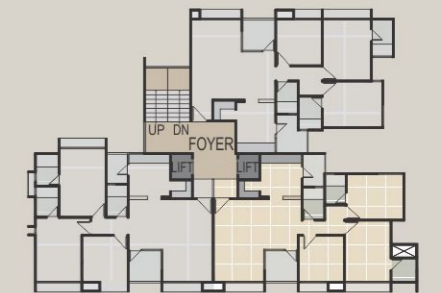
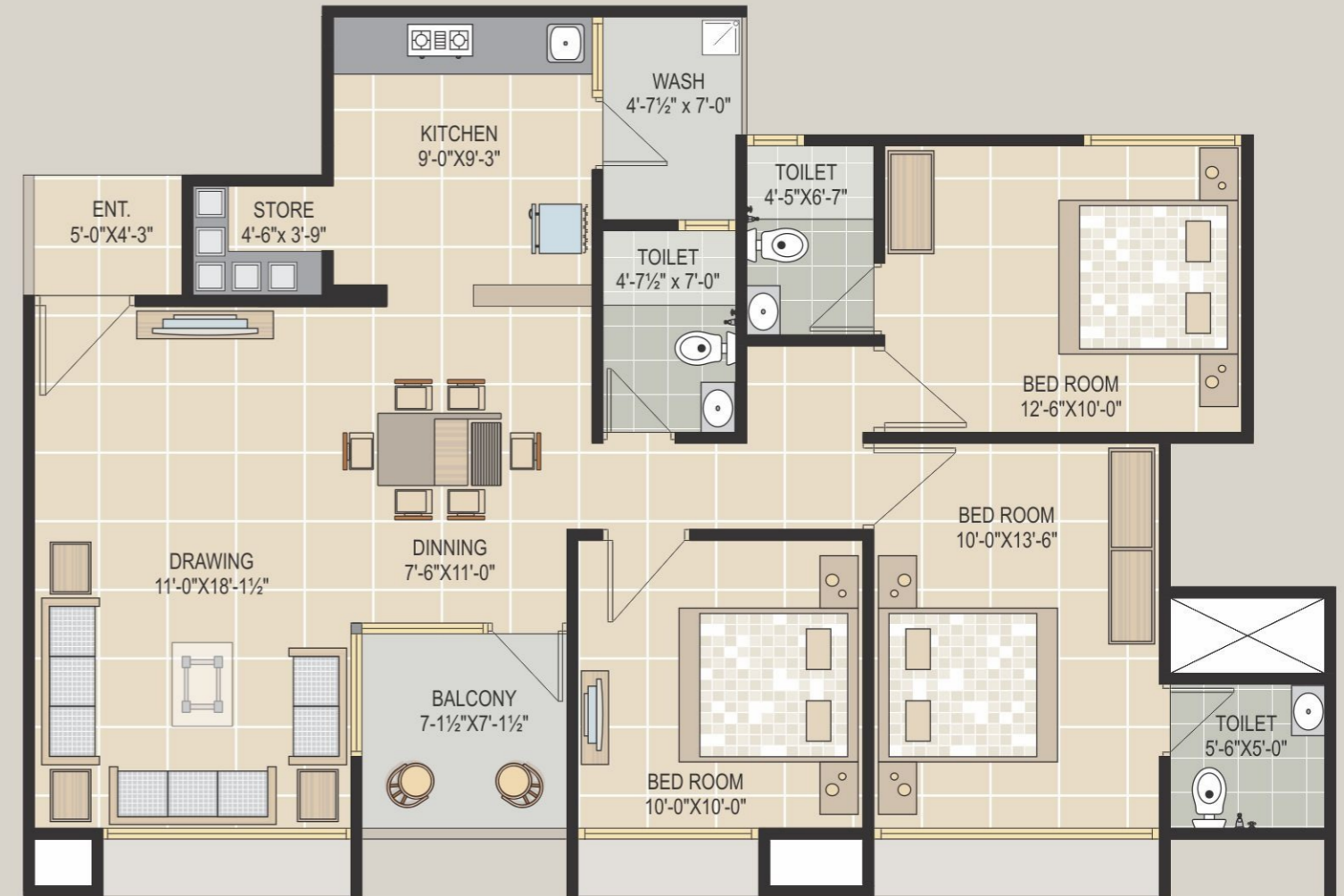


AVANISky



blending joy, comforts & tranquillity

typical floor TYPE : 2





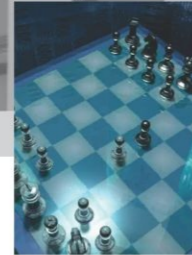
24 hour water supply



children play



indoor game



library



garden space



Salient Features:

Earthquake resistant structure design • Attractive entrance main gate and foyer • 24 hour water supply. Common bore well with submersible or pressure pump • A shopping complex, school & temple are near by our site • A well developed landscaped common garden space with children play area 24 hours security Club house with indoor game & library • Branded passenger two lift in each block • huge size under ground water tank • Generator will be provided for back up.

Structure: RCC frame structure with brick masonry partition wall .

Flooring: Good quality vitrified tiles flooring in entire flat. China mosaic flooring on terrace.

Wall Finish: Internal smooth mala plaster with white putty. External sand face double coat cement plaster with acrylic paint.

Kitchen: Black granite cooking platform with glazed tiles up to lintel level with SS sink. Service platform of black granite. Provision for gas line in kitchen & toilets.

Doors & Windows: Decorative main door with wooden frame. Flush door with marble frame for all bed rooms. Laminated flush door with marble frame for toilets. All windows are powder coated aluminum section with sliding plain glass. Marble stone windows sill.

Toilets: Glazed tiles dedo in all toilets up to lintel level with architectural design. Geyser point in attached toilets. Jaguar or equivalent fixture.

Electrification: ISI Concealed electric wiring in all rooms. TV, AC, Telephone points in drawing room and master bedroom.

- Developers reserve the rights for attraction of specification and design.
- only internal changes will be allowed with prior permission & shall be charged extra.
- All dimension/area are approximate average & subject to variations.
- Irregular payments shall cause cancellation of booking.
- AMC, Torrents Power GEB, Legal expenses, GST, Service tax & other Govt. Charges, Stamp & Registration, Maintenance charges & society membership fees shall be borne by the members.
- This brochure is not to be treated as part of the legal document it is for the easy display of the project."

Please Note

key plan



Site : Nr. Swaminarayan Temple, Haridarshan Cross Road, Naroda, Ahmedabad.